



Admission Requirements

Admission to this cohort-based program occurs once yearly for coursework to begin in July. All application materials must be submitted by the February 1 deadline to be considered for admission, and finalists will be required to interview with program faculty prior to final admission decisions.

You will need:

- Master's degree from an accredited institution of higher education
- Preferred cumulative GPA of 3.25 on a 4.0 scale
- Official undergraduate and graduate transcripts
- Three letters of recommendation for this program
- Current CV/resume detailing employment background
- Personal essay articulating goals and expectations

**WILLIAM
PATERSON
UNIVERSITY**
wpunj.edu

**WILLIAM
PATERSON
UNIVERSITY**
wpunj.edu



Graduate Studies at William Paterson University

Founded in 1855 and located on 380 wooded acres in suburban Wayne, New Jersey, William Paterson University is composed of five academic colleges: College of the Arts and Communication, Cotsakos College of Business, College of Education, College of Humanities and Social Sciences, and College of Science and Health. In addition to its outstanding graduate programs, the University offers a wide range of undergraduate programs, as well as a number of programs leading to teacher certification and other professional licensing qualifications.

When you choose graduate study at William Paterson University, you will benefit from small classes; numerous research, internship, and clinical experiences; and sophisticated educational resources. You will receive individualized attention from faculty who provide a valuable blend of accomplished scholarship and practical, applied experience. Among the University's faculty are 35 Fulbright scholars and recipients of many other awards, grants, and fellowships.

For graduate students, William Paterson University is a place to accelerate your career on your own terms—and turn your aspirations into achievements. Our high-quality programs make it more affordable, convenient, and flexible to acquire the skills you need for success.

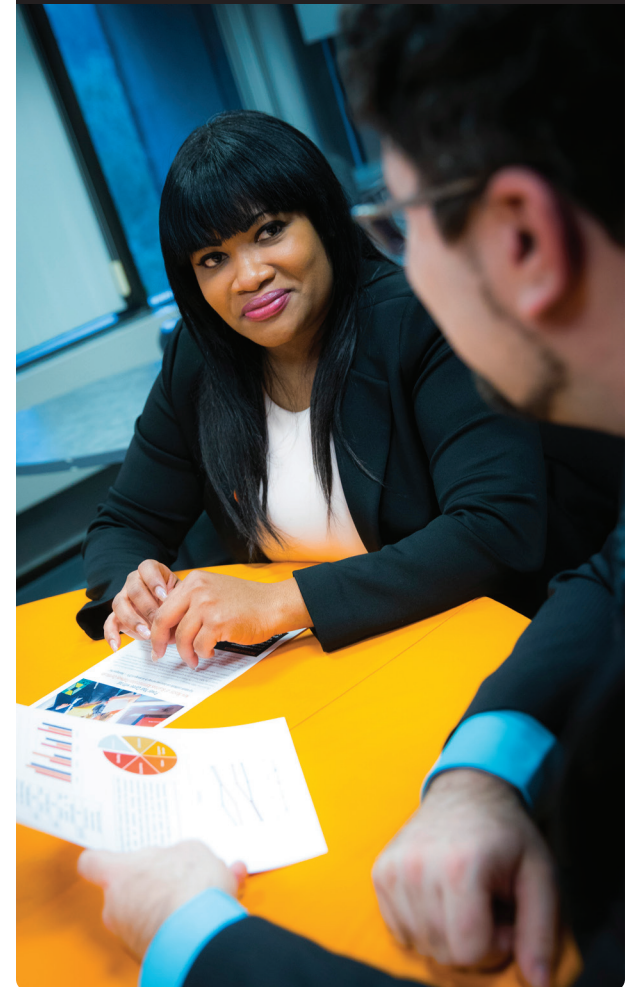
At William Paterson, we provide a supportive environment to help you balance graduate study with work and family responsibilities. Most graduate classes are held in the evenings or on weekends, with many programs available online. Financial aid—including a limited number of graduate assistantships—is available to qualified students.

COLLEGE OF EDUCATION
**WILLIAM PATERSON
UNIVERSITY**
Will. Power.



**Department of Educational Leadership
and Professional Studies**

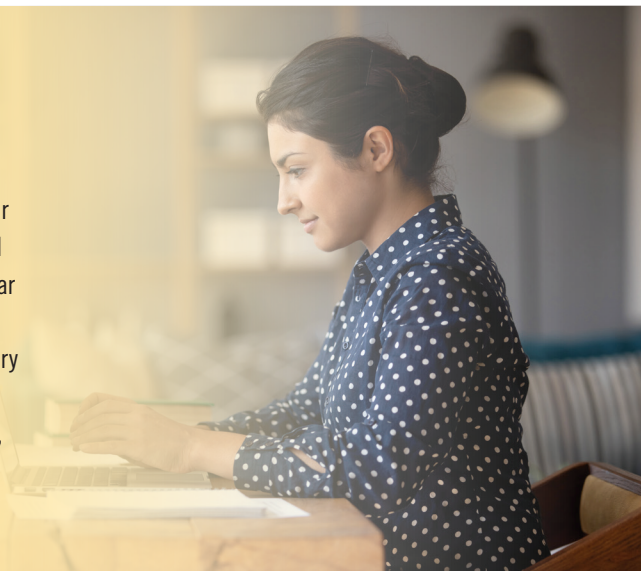
Doctor of Education in Leadership (EdD)



Department of Educational Leadership and Professional Studies

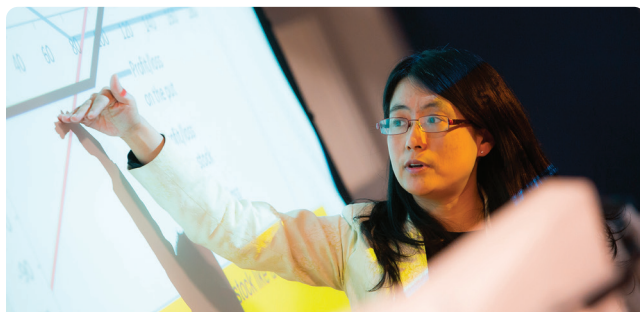
EdD in Leadership

The doctor of education in leadership (EdD) program will enhance your leadership skills for career advancement and personal or professional development. Offered in a low-residency, hybrid format, this three-year 55-credit program is especially suitable for working professionals. Designed for both novice and experienced leaders, the multidisciplinary program prepares candidates for executive leadership positions in a variety of career settings, including but not limited to P-12 education, higher education, social services, healthcare, nonprofit and for-profit business enterprises, faith-based organizations, and government.



Preparing You for Leadership

The doctor of education in leadership at William Paterson University will prepare you as a scholar-practitioner to solve practical, everyday problems and provide executive leadership in a broad spectrum of disciplines and settings. The program is built on a research-based, multidisciplinary theoretical foundation to develop the *whole person as a leader*. It is designed to foster growth personally and professionally through guided introspection and shared reflection.



About the Program

Taught by expert faculty from the College of Education and a multidisciplinary team of instructors from throughout the University, candidates take two courses in each fall and spring semester and complete a three-day residency requirement during the summer. Courses in the fall and spring semesters meet in-person one Saturday a month. All other work is completed online. A unique feature of the program is the Leader Learner Community concept, where small groups of students with similar interests meet regularly with a faculty mentor to further develop their professional acumen and make important career connections.

For More Information

Robert Seal, EdD
Professor, Educational Leadership & Professional Studies
EdD Program Director
sealr@wpunj.edu (973) 720-2410

For Applications

Office of Graduate Admissions
graduate@wpunj.edu 973-720-3641

Apply Online

wpunjgrad.org/apply



This program brings together aspiring leaders in a cohort format. In the classroom and in practice, doctoral candidates learn and grow in an environment that is respectful and celebrates each person's unique characteristics and experiences. Through practical, real-world simulations and experiences, doctoral candidates learn to act with vision and purpose to lead and transform organizations.